

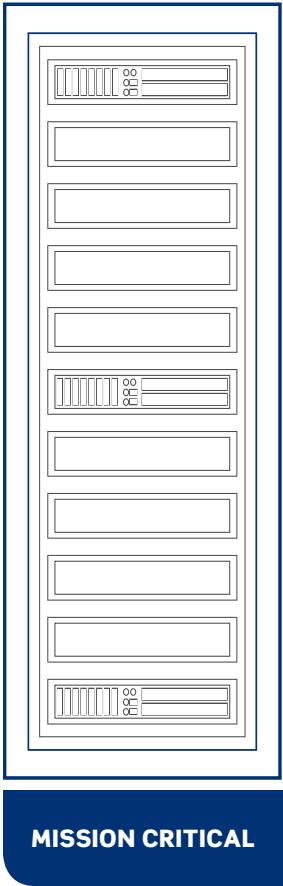
## COPPER SYSTEMS

The smart choice for delivering best-in-class performance across any application.



# Copper Systems

Leviton copper systems combine top-tier category-rated performance with a high-density, user-friendly design to deliver the industry’s most innovative family of solutions. Whether supporting data center applications with Atlas-X1™, a large enterprise with eXtreme™, or a small business infrastructure with GigaMax™, Leviton has the system for your needs.

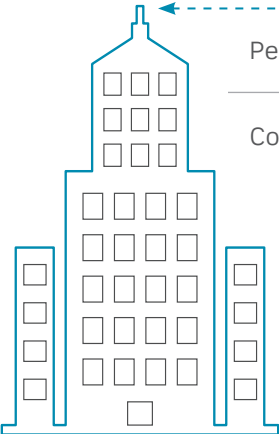


High-density shielded systems with shorter depth connector for better bend radius

Advanced features (icons, solid metal body, shutters) for clear network ID and protection

Unified form factor (Cat 5e to Cat 8) and termination style for easy migration

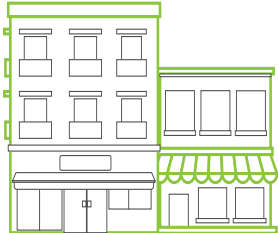
Tool-free termination and re-termination for easy and predictable installations



ENTERPRISE

Performance exceeds the standard

Component-rated products available



LIGHT COMMERCIAL MDU

Third-party tested and verified

Color options

Extended warranty

## GigaMax™

UTP Cat 5e

Delivers proven performance with the reliability you have come to expect from Leviton's category 5e solutions.



## eXtreme™

UTP Cat 5e | 6 | 6A

Pairs high-quality, exceptional performance with a user-friendly design to support fast, easy installations.



## Atlas-X1™

UTP and Shielded Cat 5e | 6 | 6A

A premium category-rated system that delivers the highest level of verified performance and reliability.



STANDARD SYSTEM

ENHANCED SYSTEM

PREMIUM SYSTEM





**MISSION CRITICAL:** DATA CENTERS, LABS, UNIVERSITIES, HOSPITALS, INDUSTRIAL, FINANCIAL





## Atlas-X1™

Our premium category-rated system delivers the highest level of verified performance and reliability, offers tool-free termination for simplified installations, and is easily scalable for migrations up to 40GBASE-T. Atlas-X1 is ideal for deployment in all types of mission-critical networks.

UTP and Shielded Cat 5e | Cat 6 | Cat 6A

Innovative wire manager with strain relief and door-release levers support quick, repeatable terminations

Patented triple-stage compensation provides industry-leading performance (Cat 6A only)

## Atlas-X1 UTP Connector

The only category-rated metal-bodied UTP connector that delivers the highest performance in a scalable, unified form factor (Cat 5e to Cat 8). Manufactured in the United States.

Fast and simple tool-free terminations

Patented Retention Force Technology (RFT) protects against time damage and increases system longevity

13 connector colors, with matching-color icons included for easy identification (pack of 72 icons also sold separately)

Supports frequent moves, adds, and changes

## Recommended Patch Panels for Atlas-X1 UTP System

Simple termination and improved cable routing combined with strength and durability to provide a reliable, high-density patching solution.

Solid metal body provides unparalleled durability in a UTP connector

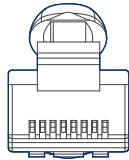
# Atlas-X1™ UTP

**MISSION CRITICAL:** DATA CENTERS, LABS, UNIVERSITIES, HOSPITALS, INDUSTRIAL, FINANCIAL



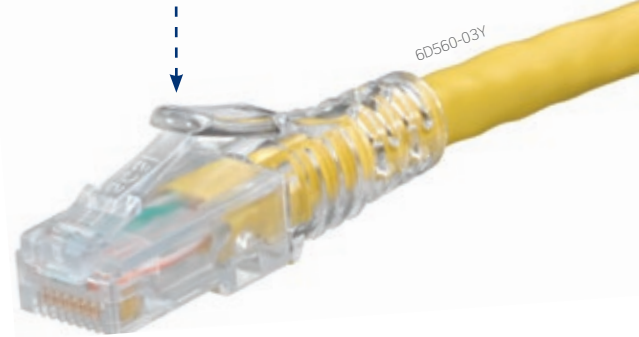
## Atlas-X1™ Cat 6A UTP Cable

Small diameter patented Noise-Canceling Helix Technology cable provides superior alien crosstalk (AXT) suppression while increasing pathway capacity and improving airflow to critical active equipment.



Narrow profile for easier access in tight spaces

Snagless design prevents tab breakage

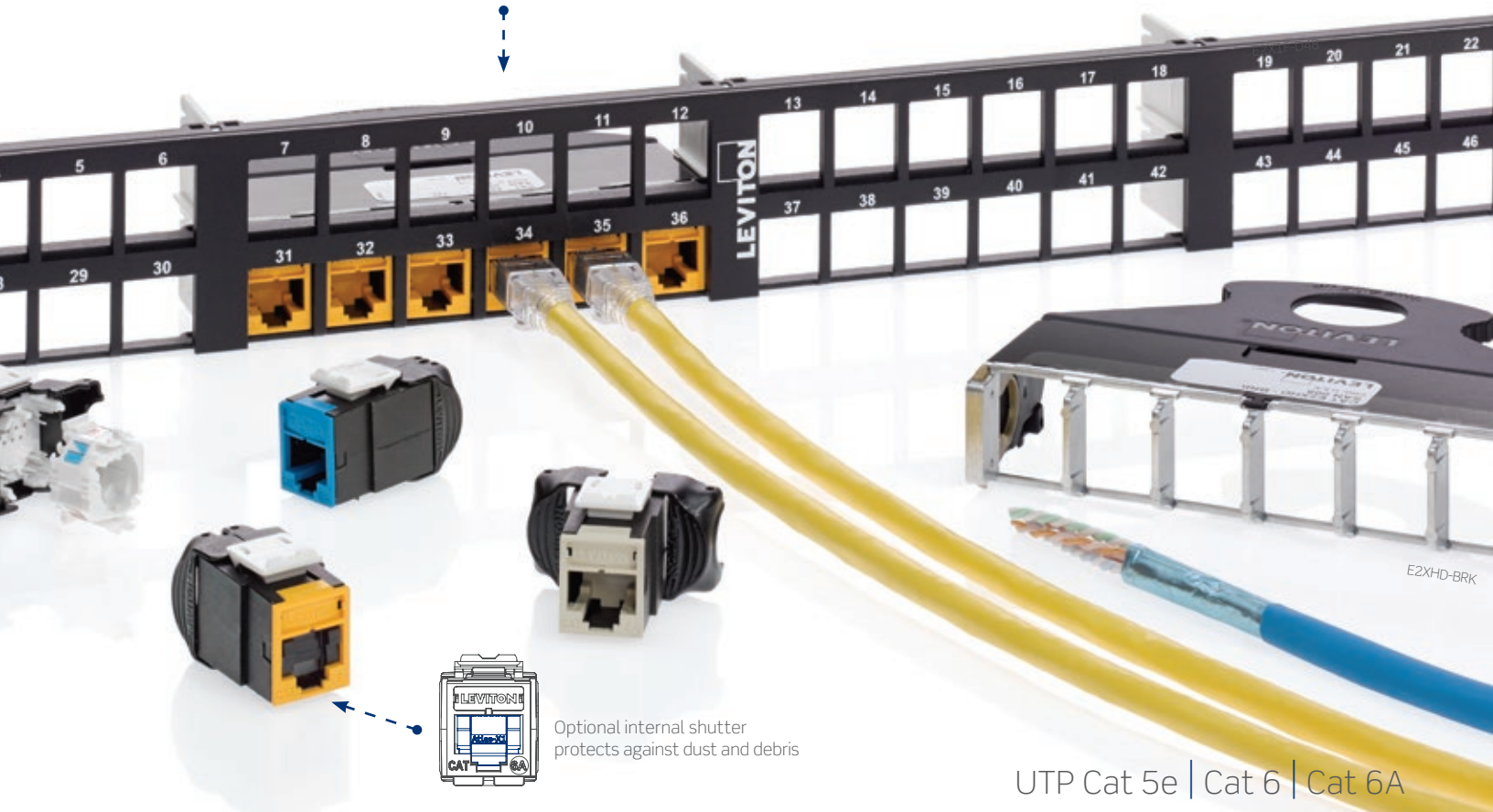


Provides AXT and EMI resistance without requiring grounding or bonding

## Atlas-X1 UTP Patch Cords

High performing patch cords designed with a narrow profile to alleviate congestion in high-density applications.

Snap-in e2XHD cassettes make it easy to deploy networks quickly



UTP Cat 5e | Cat 6 | Cat 6A



Snagless design prevents  
tab breakage

## Atlas-X1 Shielded Cable

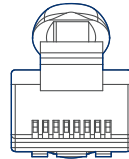
Supports the most advanced mission-critical applications with a smaller, innovative design that improves signal isolation, reduces termination time, and minimizes material costs.

Increased signal isolation prevents  
contaminant noise from entering  
cabling system

FTP-A3-MSS

## Atlas-X1 Shielded Patch Cords

High-performing patch cord designed with a narrow profile boot to alleviate congestion in high-density shielded applications.



Narrow profile  
for easier access  
in tight spaces

Shielding protects against Electromagnetic  
Interference (EMI) and Radio Frequency  
Interference (RFI), and provides excellent  
alien crosstalk (AXT) suppression

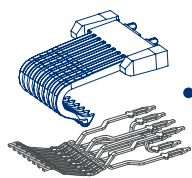


# Atlas-X1™ Shielded

Optional internal shutter  
protects against dust and debris

**MISSION CRITICAL:** DATA CENTERS, LABS, UNIVERSITIES, HOSPITALS, INDUSTRIAL, FINANCIAL





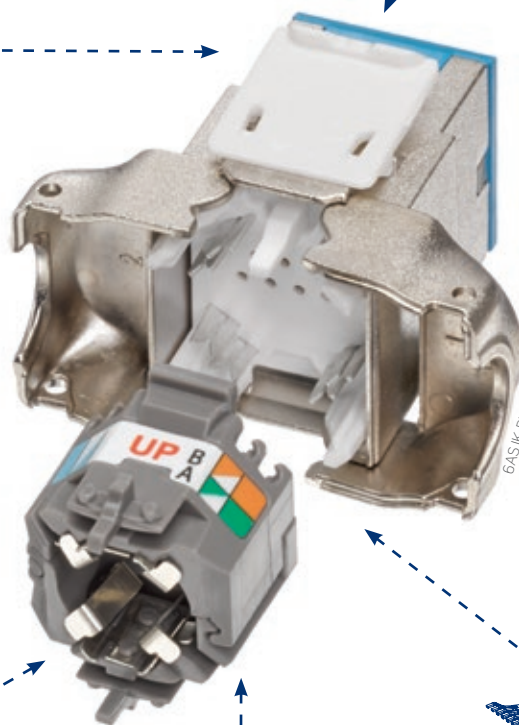
Patented Retention Force Technology (RFT) protects against time damage and increases system longevity



13 connector colors, with matching-color icons included for easy identification (pack of 72 icons also sold separately)

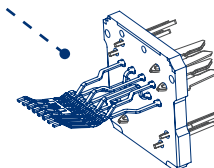
## Atlas-X1™ Shielded Connector

The only category-rated shielded connector available in 13 colors for greater network planning flexibility. Manufactured in the United States.



Fast and simple tool-free terminations

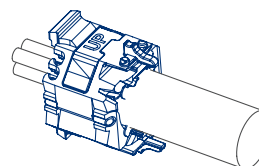
360° grounding on shielded wire manager with integrated drain wire capture



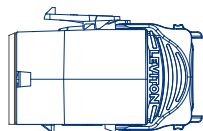
Patented triple-stage compensation provides industry-leading performance (Cat 6A only)



Stainless-steel "comb" maintains consistent ground path between connector and panel



Innovative wire manager with strain relief and door-release levers support quick, repeatable terminations



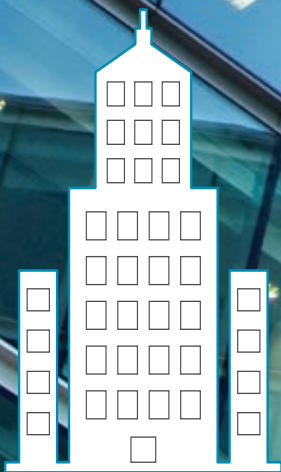
Solid metal body provides unparalleled durability in a shielded connector

Shorter depth shielded connector provides improved bend radius and density

## Atlas-X1 Shielded Patch Panels

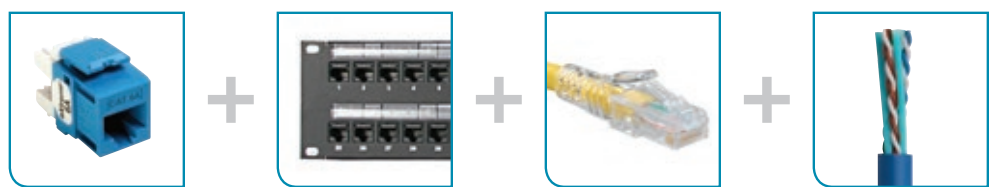
Industry-leading durability with exceptional alien crosstalk (AXT) suppression and enhanced protection against Electromagnetic and Radio Frequency Interface (EMI/RFI).

Shielded Cat 5e | Cat 6 | Cat 6A



**ENTERPRISE:** K-12, OFFICE BUILDINGS, TELECOMMUNICATIONS ROOMS

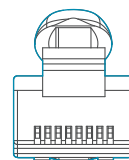
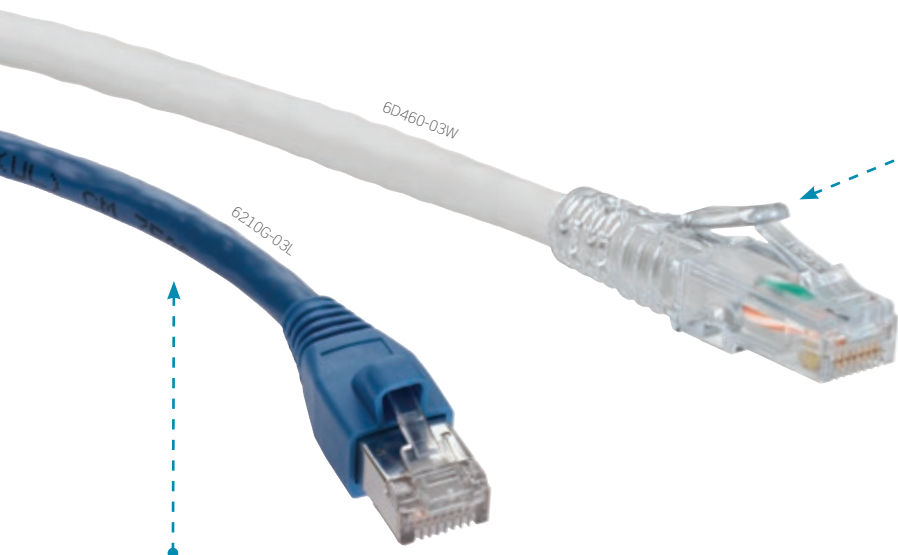




## eXtreme™

The Leviton eXtreme copper system pairs high-quality, guaranteed performance with a user-friendly design to support fast, easy installations. With enhanced performance and unmatched system longevity, the eXtreme copper system is well suited for an extensive range of enterprise and commercial networks.

UTP Cat 5e | Cat 6 | Cat 6A



Snagless design prevents tab breakage on Cat 5e and 6

Stranded conductors support long-term channel integrity for Cat 6A

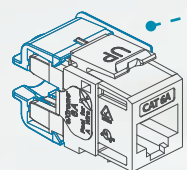
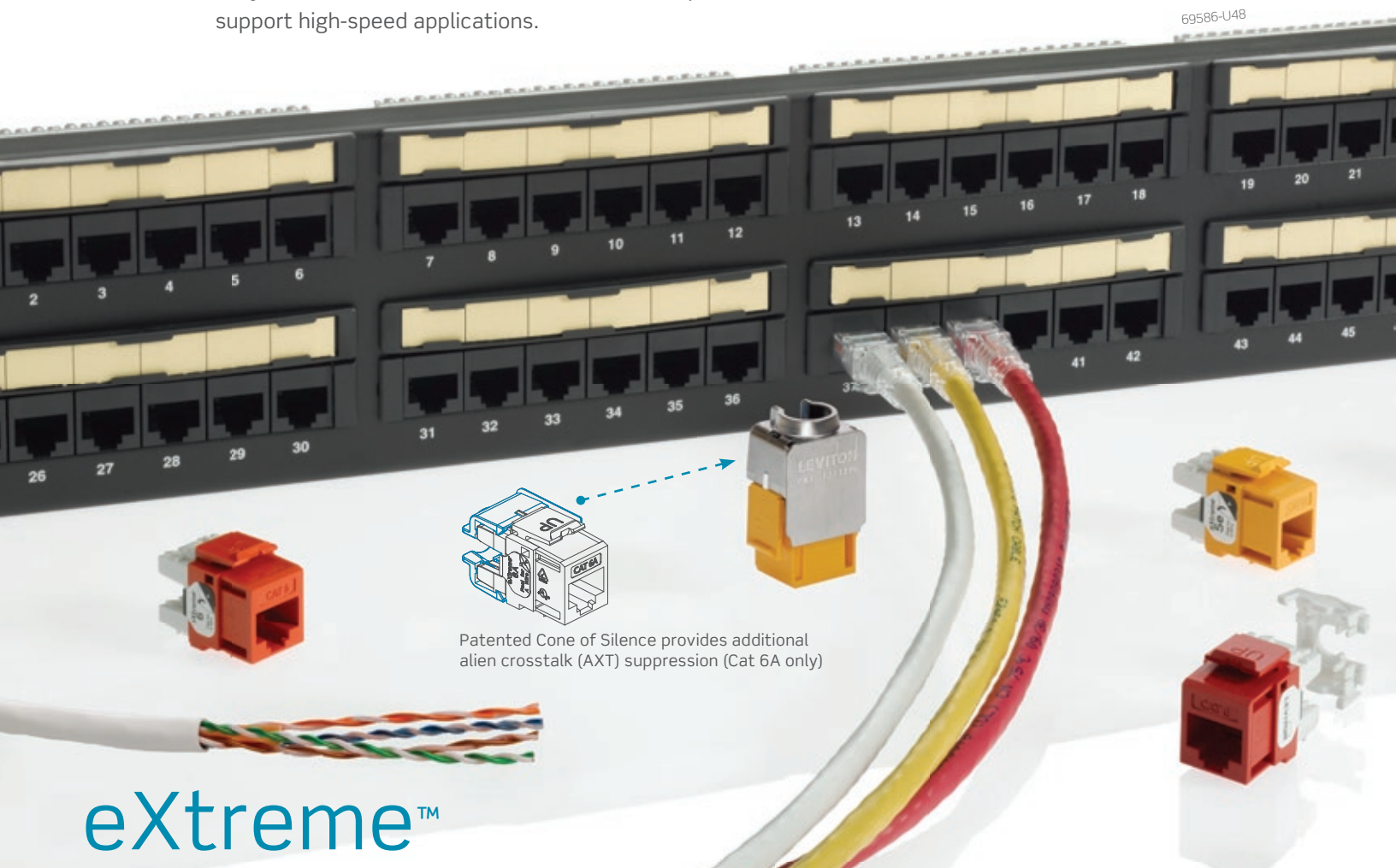
## eXtreme UTP Patch Cords

Supports traditional density panels and switches, and the snagless plug enables easy moves, adds, and changes.

## Recommended Patch Panels for eXtreme System

Easy installation and available in a multitude of port densities to support high-speed applications.

69586-U48



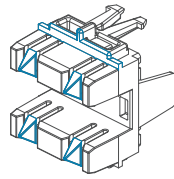
Patented Cone of Silence provides additional alien crosstalk (AXT) suppression (Cat 6A only)

# eXtreme™

ENTERPRISE: K-12, OFFICE BUILDINGS, TELECOMMUNICATIONS ROOMS

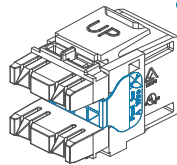


Innovative cutting ledge and pair separation towers simplify punchdown, reduce rework, and support faster terminations



## eXtreme™ Connector

Enhanced category-rated connector tested to stringent requirements to ensure performance is above the industry standard.



Patented tear-away dual-layer T568A/B label for faster and easier field terminations



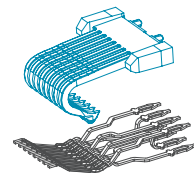
Available in flat, angled, recessed angled, and recessed in 12-, 24-, 48-, and 96-port counts



Compatible with Fluke JackRapid™ Punchdown and Leviton Palm Tool for quick and easy terminations



Improved insertion loss for stronger signal-to-noise ratio



Patented Retention Force Technology (RFT) protects against wire damage and increases system longevity



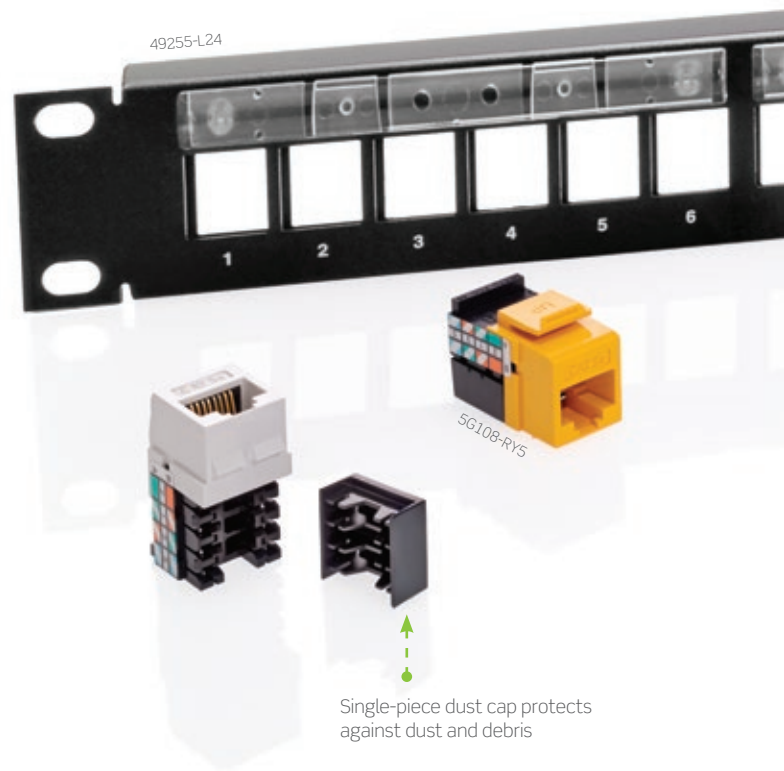
## eXtreme Cable

A true multimedia solution, capable of handling voice, video, and data up to 10 gigabit Ethernet speeds. The patented design minimizes alien crosstalk while supporting high-density applications.

UTP Cat 5e | Cat 6 | Cat 6A

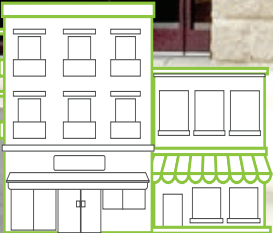
## Recommended Patch Panels for GigaMax System

Wide selection of panels that allow you to mix and match voice, data, video, and audio, all in a single panel.



## GigaMax™

The GigaMax Cat 5e UTP system delivers reliable, field-proven performance. This cost-effective structured cabling system is ideal for small commercial and MDU environments.



**LIGHT COMMERCIAL AND MDU:** APARTMENT BUILDINGS, MIXED USE BUILDINGS, SMALL BUSINESSES



## GigaMax™ UTP Patch Cords

Cost-effective patching solution, field proven to reliably support 1000BASE-T applications.

Available in flat, angled, recessed, and recessed angled



Available in four standard lengths (custom lengths available)



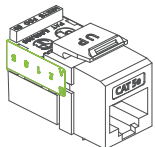
## GigaMax Cable

Dependable, simplified design ideal for horizontal network and voice applications in a structured cabling network.

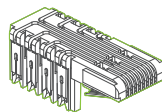
Small, round design for easy installation and reduced maintenance costs



Compatible with Fluke JackRapid™ Punchdown and Leviton Palm Tool for quick and easy terminations



Single wiring label allows for easy field terminations



One-piece frame ensures increased durability

## GigaMax Connector

Field-proven 1000BASE-T solution with a durable one-piece frame for increased longevity



UTP Cat 5e

# Atlas-X1™

UTP and Shielded Cat 5e | Cat 6 | Cat 6A

**MISSION CRITICAL: DATA CENTERS, LABS, UNIVERSITIES, HOSPITALS, INDUSTRIAL, FINANCIAL**



## Atlas-X1 UTP System Components

	Cat 5e	Cat 6	Cat 6A
Atlas-X1 UTP Connectors	5EUJK-R*5	61UJK-R*6	[A] 6AUJK-R*6
Atlas-X1 UTP Connectors with Shutters	5EUJK-S*5	61UJK-S*6	6AUJK-S*6
Atlas-X1 Bulk Icons (pack of 72)	ICONS-IC*	ICONS-IC*	ICONS-IC*
Patch Panels	[B] Select from our extensive patch panel selection shown on pages 18-19		
Atlas-X1 UTP Patch Cords	5D560-xx#	6D560-xx+	[C] 6AS10-xx+
Atlas-X1 Riser-Rated Cable, Blue	EUT5R-MLB^	EUT6R-MLB^	[D] DUTAR-MLS^
Atlas-X1 Plenum-Rated Cable, Blue	EUT5P-MLB^	EUT6P-MLB^	DUTAP-MLS^
Atlas-X1 Low-Smoke Zero-Halogen Cable, Blue	UTP5Z-MLB^	UTP6Z-MLB^	DUTAZ-MLS^ DUTA3-MLS^

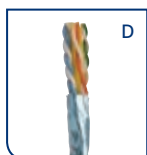
\* = Choose from any color swatches shown below

# = Color: White (W), Yellow (Y), Blue (L), Green (G), Grey (S)

^ = Cat 5e/Cat 6: sold in 305-meter reel in box, Cat 6A: sold in 305-meter spools; additional colors available, visit [leviton.com/cable](http://leviton.com/cable)

+ = Color: White (W), Yellow (Y), Red (R), Blue (L), Green (G), Grey (S), Black (E)

xx = Length in feet



## Atlas-X1 Shielded System Components

	Cat 5e	Cat 6	Cat 6A
Atlas-X1 Shielded Connectors	5ESJK-R*5	61SJK-R*6	[E] 6ASJK-R*6
Atlas-X1 Shielded Connectors with Shutters	5ESJK-S*5	61SJK-S*6	6ASJK-S*6
Atlas-X1 Bulk Icons (pack of 72)	ICONS-IC*	ICONS-IC*	ICONS-IC*
[F] Atlas-X1 Flat Shielded QuickPort™ Patch Panels	4S255-xxx	4S255-xxx	4S255-xxx
Atlas-X1 Angled Shielded QuickPort Patch Panels	4S256-xxx	4S256-xxx	4S256-xxx
Atlas-X1 Shielded Patch Cords	5S460-xxS	6S560-xxS	[G] 6AS10-xx+
Atlas-X1 F/UTP Low-Smoke Zero-Halogen Cable, Grey		FTP6Z-MSS^	[H] FTPAZ-MSS^ FTP3-MSS^
Atlas-X1 F/UTP Low-Smoke Zero-Halogen Cable, White	FTP5Z-5WS^		

\* = Choose from any color swatches shown below

xxx = 1RU 24-Port (S24), 1RU 48-Port (D48), 2RU 48-Port (S48)

^ = Cat 5e/Cat 6: sold in 305-meter reel in box, Cat 6A: sold in 305-meter spools; additional colors available, visit [leviton.com/cable](http://leviton.com/cable)

+ = Color: White (W), Yellow (Y), Red (R), Blue (L), Green (G), Grey (S), Black (E)

xx = Length in feet





# eXtreme™

UTP Cat 5e | Cat 6 | Cat 6A

**ENTERPRISE: K-12, OFFICE BUILDINGS, TELECOMMUNICATIONS ROOMS**



## eXtreme UTP System Components

	Cat 5e	Cat 6	Cat 6A
eXtreme UTP Connectors	5G110-R*5	[I] 61110-R*6	6110G-R*6
Patch Panels	[J] Select from our extensive patch panel selection shown on pages 18-19		
eXtreme UTP Patch Cords	5D460-xx <sup>xx</sup>	6D460-xx+ 62460-xx+	[K] 6210G-xx+
eXtreme UTP Patch Cords, Low-Smoke Zero-Halogen (LSZH)		6Z460-++ <sup>°</sup>	6AZ10-++ <sup>°</sup>
eXtreme Riser-Rated Cable, Blue	UTP5R-MLB <sup>^</sup>	UTP6R-MLB <sup>^</sup>	[L] EUTAR-MLS <sup>^</sup>
eXtreme Plenum-Rated Cable, Blue	UTP5P-MLB <sup>^</sup>	UTP6P-MLB <sup>^</sup>	EUTAP-MLS <sup>^</sup>
eXtreme CM-Rated Cable, Blue	UTP5M-MLB <sup>^</sup>	UTP6M-MLB <sup>^</sup>	
eXtreme Low-Smoke Zero-Halogen Cable, Blue			UTCAZ-MLS <sup>^</sup>

\* = Choose from any of the color swatches shown below

xx = Length in feet

xx = Color: White (W), Yellow (Y), Blue (L), Green (G), Grey (S)

++ = Color: White (WH), Blue (BL), Grey (GY)

° = Length in meters

+ = Color: White (W), Yellow (Y), Red (R), Blue (L), Green (G), Grey (S), Black (E)

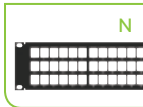
<sup>^</sup> = Cat 5e/Cat 6: sold in 305-meter reel in box, Cat 6A: sold in 305-meter spools; additional colors available, visit [leviton.com/cable](http://leviton.com/cable)



# GigaMax™

UTP Cat 5e

**LIGHT COMMERCIAL AND MDU: APARTMENT BUILDINGS, MIXED USE BUILDINGS, SMALL BUSINESSES**



## GigaMax UTP System Components

	Cat 5e
GigaMax UTP Connector	[M] 5G108-R*5
Patch Panels	[N] Select from our extensive patch panel selection shown on pages 18-19
GigaMax UTP Patch Cord	[O] 5G460-xx+
GigaMax PVC Cable, Blue	[P] UTP5N-MLB <sup>^</sup>

\* = Choose from any of the color swatches shown below

+ = Color: White (W), Yellow (Y), Blue (L), Green (G), Grey (S)

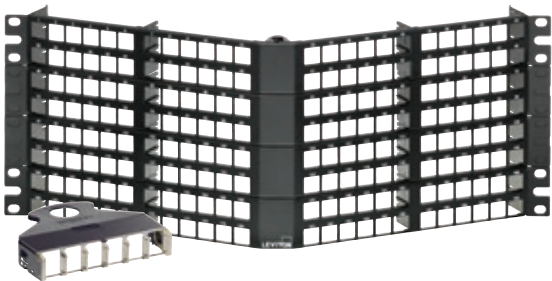
xx = Length in feet

<sup>^</sup> = Sold in 305-meter reel in box, additional colors available, visit [leviton.com/cable](http://leviton.com/cable)



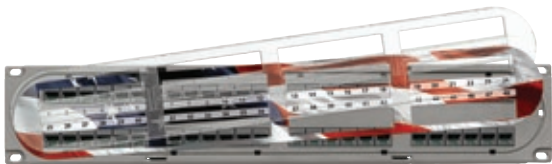
# UTP Patch Panels

Leviton offers one of the industry's largest selection of high-quality patch panels to support the latest technologies and provide ideal configurations for unique applications.



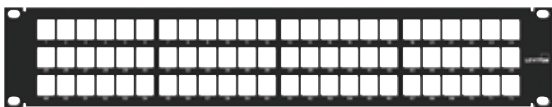
**e2XHD** - Simple termination and improved cable routing. Cassettes quickly snap in and pull out of high-density panels, making installation and maintenance easier than ever. Panel covers and cassette blanks offer extra protection against dust and damage.

Recommended for: **Atlas-X1™**



**Composite** - Combines strength and durability with a sleek look. The unique style and customizable face make it ideal for showcase environments, and provide a uniform appearance when installed with Versi-duct™ Cable Managers. The panel is 100% recyclable and made in the United States.

Recommended for: **Atlas-X1**



**QuickPort™** - Wide selection of panels allow you to create the perfect mix of voice, data, video, and audio, all in a single panel.

Recommended for: **Atlas-X1**, **eXtreme™**, and **GigaMax™**



**110-Style** - Ideal for modular cross connection and available in a multitude of port densities to meet the needs of high-speed data applications. Craft-friendly 110 punchdowns on the rear of the panel make installations fast and easy.

Recommended for: **eXtreme** and **GigaMax**

UTP Patch Panels		Cat 5e	Cat 6	Cat 6A
<b>e2XHD</b> Recommended for: <b>Atlas-X1™</b>	1RU 48-Port Flat*	E2X1F-D48	E2X1F-D48	E2X1F-D48
	4RU 192-Port Flat*	E2X4F-192	E2X4F-192	E2X4F-192
	1RU 48-Port Angled*	E2X1A-D48	E2X1A-D48	E2X1A-D48
	4RU 192-Port Angled*	E2X4A-192	E2X4A-192	E2X4A-192
	Cassette*	E2XHD-BRK	E2XHD-BRK	E2XHD-BRK
<b>Composite</b> Recommended for: <b>Atlas-X1</b>	2RU 48-Port Flat	C1586-U48	C1686-U48	—
	2RU 48-Port Flat*	C1255-H48	C1255-H48	C1255-H48
<b>QuickPort™</b> Recommended for: <b>Atlas-X1</b> , <b>eXtreme™</b> , and <b>GigaMax™</b>	1RU 24-Port Flat, kitted with connectors	5G270-U24	69270-U24	6910G-U24
	2RU 48-Port Flat, kitted with connectors	5G270-U48	69270-U48	6910G-U48
	1RU 24-Port Flat*	49255-H24	49255-H24	49255-H24
	1RU 48-Port Flat*	49255-Q48	49255-Q48	49255-Q48
	2RU 48-Port Flat*	49255-H48	49255-H48	49255-H48
	2RU 72-Port Flat*	49255-D72	49255-D72	49255-D72
	1RU 24-Port Flat with magnifying lens holder*	49255-L24	49255-L24	49255-L24
	2RU 48-Port Flat with magnifying lens holder	49255-L48	49255-L48	49255-L48
	1RU 48-Port Flat, Die-Cast, kitted with connectors	5G270-D48	69270-D48	—
	1RU 48-Port Flat, Die-Cast*	49255-D48	49255-D48	49255-D48
	1RU 24-Port Angled*	49256-H24	49256-H24	49256-H24
	1RU 48-Port Angled*	49256-D48	49256-D48	49256-D48
	2RU 48-Port Angled*	49256-H48	49256-H48	49256-H48
	2RU 72-Port Angled*	49256-D72	49256-D72	49256-D72
	1RU 24-Port Recessed-Flat*	49255-R24	49255-R24	49255-R24
	2RU 48-Port Recessed-Flat*	49255-R48	49255-R48	49255-R48
	1RU 24-Port Recessed-Angled*	4W256-H24	4W256-H24	4W256-H24
	2RU 48-Port Recessed-Angled*	4W256-H48	4W256-H48	4W256-H48
	2RU 72-Port Recessed-Angled*	4W256-D72	4W256-D72	4W256-D72
<b>110-Style</b> Recommended for: <b>eXtreme</b> and <b>GigaMax</b>	1RU 12-Port Flat	5G596-U12	69586-U12	—
	1RU 24-Port Flat	5G596-U24	69586-U24	6A586-U24
	2RU 48-Port Flat	5G596-U48	69586-U48	6A586-U48
	4RU 96-Port Flat	5G596-U96	69586-U96	—
	2RU 48-Port Flat with central labeling	5G596-C48	69586-C48	—
	1RU 24-Port Angled	5G597-U24	69587-U24	6A587-U24
	2RU 48-Port Angled	5G597-U48	69587-U48	6A587-U48
	1RU 24-Port Recessed-Flat	5G596-R24	69586-R24	—
	2RU 48-Port Recessed-Flat	5G596-R48	69586-R48	—
	2RU 48-Port Recessed-Angled	5W597-U48	6W587-U48	—

\* = Sold empty, load with any Atlas-X1, eXtreme, or GigaMax QuickPort connectors



# THE SMART CHOICE FOR A BETTER NETWORK

High-performance connectivity backed by  
the industry's best service and support

We invent the industry's best technologies. We build them to last. And we stand behind every product and every installation – delivering industry-leading performance and unbeatable service and support – throughout the life of your structured cabling system. Add in the peace of mind that comes from working with a stable, century-old supplier and you get far and away the highest return on infrastructure investment.

## Leviton Network Solutions Division Headquarters

[leviton.com/networksolutions](http://leviton.com/networksolutions)

2222-222nd Street S.E., Bothell, WA 98021 USA

### Inside Sales

T 800.722.2082

E [insidesales@leviton.com](mailto:insidesales@leviton.com)

### Technical Support

T 800.824.3005 / +1.425.486.2222

E [appeng@leviton.com](mailto:appeng@leviton.com)

### International Inside Sales

T +1.425.486.2222

E [intl@leviton.com](mailto:intl@leviton.com)

## Leviton Corporate Headquarters

[leviton.com](http://leviton.com)

201 N. Service Road, Melville, NY 11747 USA

### Customer Service

T 800.323.8920 / +1.631.812.6000

E [customerservice@leviton.com](mailto:customerservice@leviton.com)

## Leviton International Offices

### Asia / Pacific

T +1.631.812.6228

E [infoasean@leviton.com](mailto:infoasean@leviton.com)

### India / SAARC

T +971.4.886.4722

E [infoindia@leviton.com](mailto:infoindia@leviton.com)

### Caribbean

T +1.954.593.1896

E [infocaribbean@leviton.com](mailto:infocaribbean@leviton.com)

### Mexico

T +52.55.5082.1040

E [lsamarketing@leviton.com](mailto:lsamarketing@leviton.com)

### Canada

T +1.514.954.1840

E [pcservice@leviton.com](mailto:pcservice@leviton.com)

### Latin America

T +52.55.5082.1040

E [lsamarketing@leviton.com](mailto:lsamarketing@leviton.com)

### China

T +852.2774.9876

E [infochina@leviton.com](mailto:infochina@leviton.com)

### Middle East & Africa

T +971.4.886.4722

E [lmeinfo@leviton.com](mailto:lmeinfo@leviton.com)

### Colombia

T +57.1.743.6045

E [infocolombia@leviton.com](mailto:infocolombia@leviton.com)

### South Korea

T +82.2.3273.9963

E [infokorea@leviton.com](mailto:infokorea@leviton.com)

### Europe

T +33.6.8869.1380

E [infoeurope@leviton.com](mailto:infoeurope@leviton.com)

## All Other International Inquiries

E [international@leviton.com](mailto:international@leviton.com)

